



GAT MONTHLY MEMBERSHIP PROGRESS REPORT

Results as of: 4/30/2023

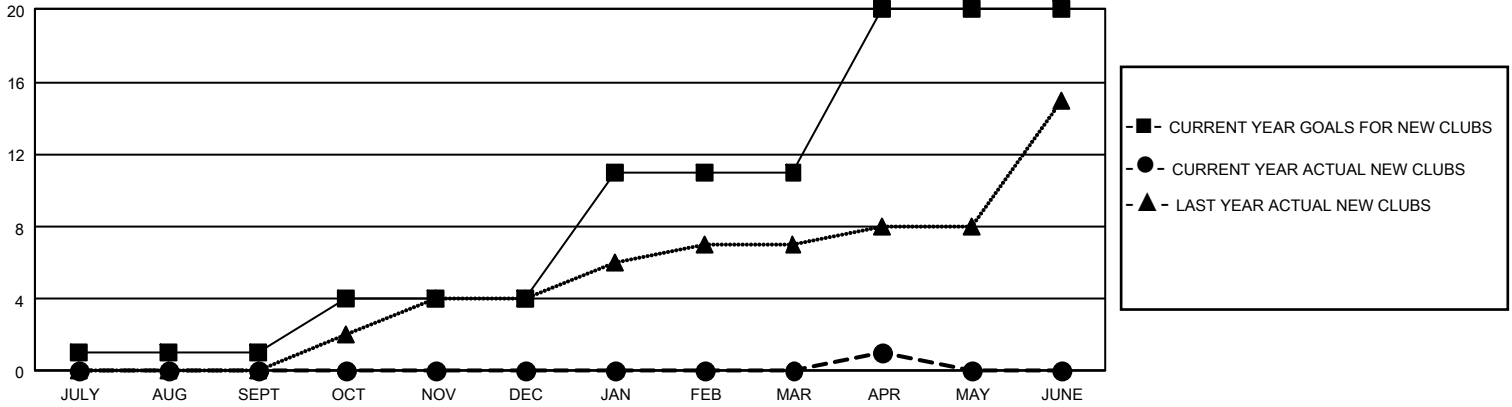
GMT Constitutional Area 3, Group H

REPORT DOES NOT INCLUDE CLUBS IN UNDISTRICTED AREAS.

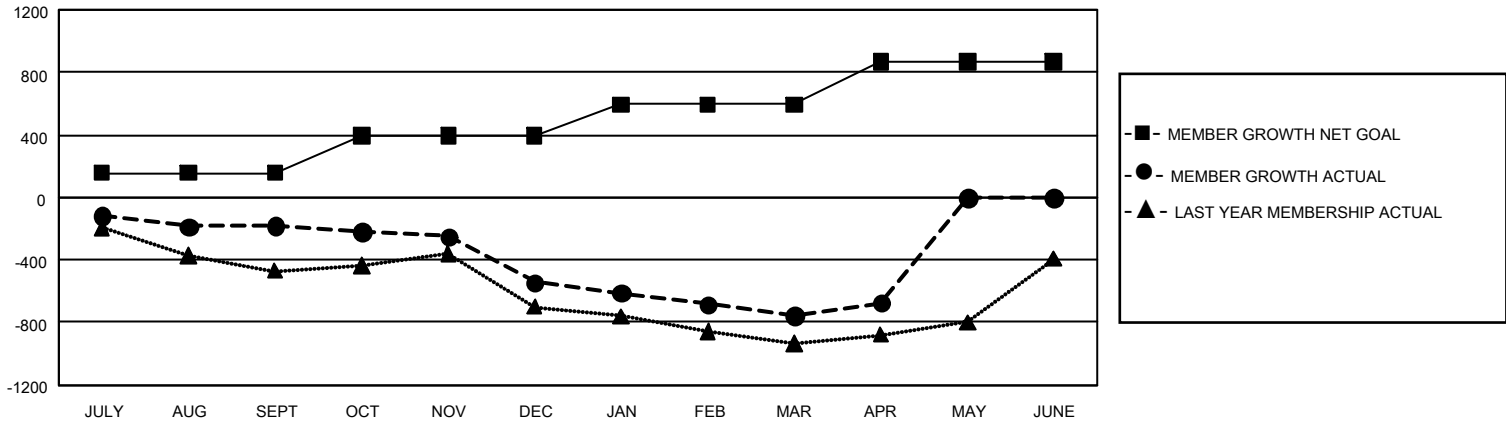
Clubs			
RESULTS FOR 2022-2023			
QUARTER	NEW CLUB GOAL	NEW CLUBS	DROPPED CLUBS
JULY/AUG/SEPT	3	0	2
OCT/NOV/DEC	9	0	5
JAN/FEB/MAR	21	0	5
APR/MAY/JUNE	27	1	0

Members			
RESULTS FOR 2022-2023			
QUARTER	MEMBER GROWTH NET GOAL	MEMBER GROWTH ACTUAL	DROPPED MEMBERS ACTUAL (including transfers)
JULY/AUG/SEPT	155	275	435
OCT/NOV/DEC	240	314	654
JAN/FEB/MAR	200	187	360
APR/MAY/JUNE	275	244	141

GOALS AND ACTUAL NEW CLUBS CUMULATIVE



GOALS AND ACTUAL MEMBERS CUMULATIVE



DROPPED CLUBS: 12 DROPPED MEMBERS DECEASED 86 CLUB CANCELLED 97 OTHER 1,406 TOTAL 1,589	244 CLUBS OF 493 ADDED 1 OR MORE NEW MEMBERS	GENDER DISTRIBUTION MALE 7,032 (49.53%) FEMALE 7,160 (50.43%) NON BINARY 1 (0.01%) PREFER NOT TO ANSWER 4 (0.03%)
	CLICK HERE FOR CUMULATIVE MEMBERSHIP DATA	TOTAL FAMILY UNIT MEMBERS 7,360 FAMILY MEMBERS PAYING HALF DUES 3,759